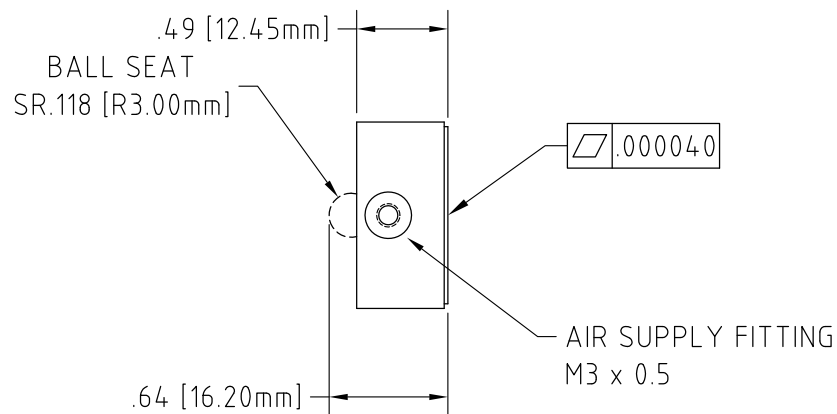
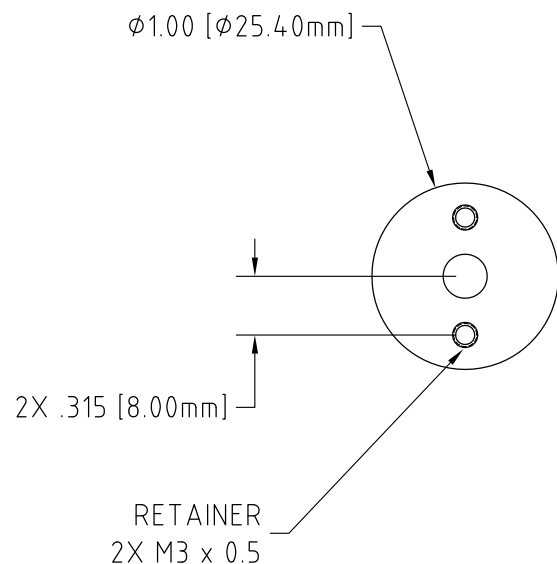



NOTES (UNLESS SPECIFIED):

1. ALL DIMENSIONS IN INCHES
2. DO NOT EXCEED RECOMMENDED LOADING SPECIFICATIONS
3. DO NOT CUT, DRILL OR MODIFY ANY PORTION OF THIS BEARING



MATERIAL ALUMINUM / POROUS CARBON	NAME		DATE	<div></div> <div>SPECIALTY COMPONENTS INC.</div>			
	DRAWN	IWL	1/14/2002				
	CHECKED						
APPROVED							
FINISH	<p>THIS DRAWING, INCLUDING ALL SUBJECT MATTER, ENCLOSES CONFIDENTIAL INFORMATION OF SPECIALTY COMPONENTS, INC. AND IS LOANED WITH THE UNDERSTANDING THAT IT SHALL BE RETURNED. IT WILL NOT BE USED FOR ANY PURPOSE EXCEPT THAT FOR WHICH LOANED UNLESS WRITTEN PERMISSION IS GRANTED BY THE OWNER. ANY DUPLICATION OF THIS DOCUMENT IS STRICTLY PROHIBITED.</p> <p>© specialty components, inc.</p>			CAGE CODE 1TV41	14 VILLAGE LANE - WALLINGFORD, CT 06492 TEL: 203.284.9112 - FAX: 203.672.0371 WEB: WWW.SPECIALTYCOMPONENTS.COM E-MAIL TO: INFO@SPECIALTYCOMPONENTS.COM		
PART NUMBER				TITLE LRAP100 AIR BEARING POROUS CARBON LINEAR			
TOLERANCES (UNLESS OTHERWISE SPECIFIED)				SIZE A		DRAWING NUMBER 610-22010	REV AD
DECIMALS	ANGLE	UNITS	SCALE			NUMBER OF SHEETS	1
.X ±	.XX ±	.XXX ±					
.015	.010	.005					
	30'	INCHES					