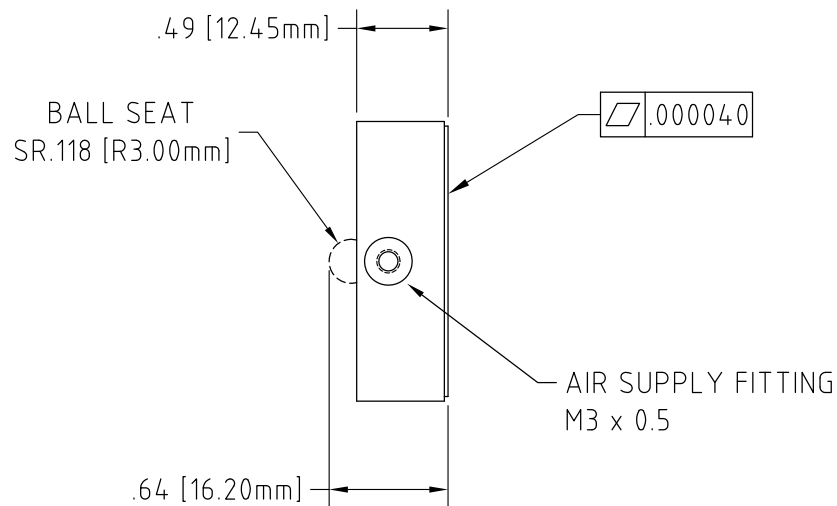
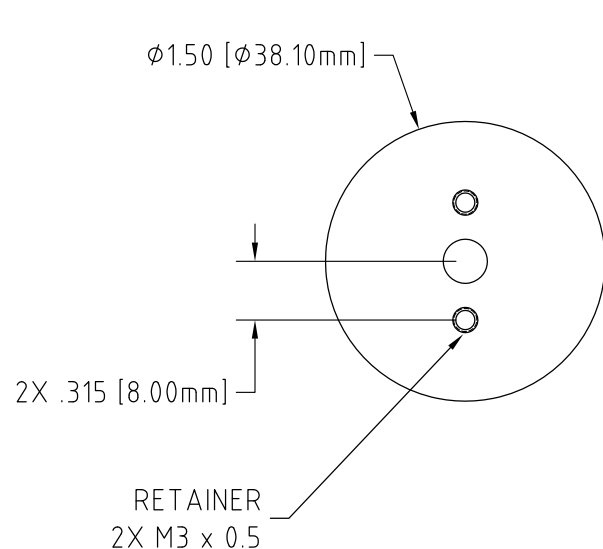



1. ALL DIMENSIONS IN INCHES
2. DO NOT EXCEED RECOMMENDED LOADING SPECIFICATIONS
3. DO NOT CUT, DRILL OR MODIFY ANY PORTION OF THIS BEARING



MATERIAL ALUMINUM / POROUS CARBON		NAME		DATE		 SPECIALTY INC. COMPONENTS	
		DRAWN	IWL	7/22/2002			
		CHECKED					
FINISH		APPROVED					
PART NUMBER		THIS DRAWING, INCLUDING ALL SUBJECT MATTER, ENCLOSES CONFIDENTIAL INFORMATION OF SPECIALTY COMPONENTS, INC. AND IS LOANED WITH THE UNDERSTANDING THAT IT SHALL BE RETURNED. IT WILL NOT BE USED FOR ANY PURPOSE EXCEPT THAT FOR WHICH LOANED UNLESS WRITTEN PERMISSION IS GRANTED BY THE OWNER. ANY DUPLICATION OF THIS DOCUMENT IS STRICTLY PROHIBITED. © specialty components, inc.				CAGE CODE	
						1TV41	
						14 VILLAGE LANE - WALLINGFORD, CT 06492 TEL: 203.284.9102 - FAX: 203.672.0371 WEB: WWW.SPECIALTYCOMPONENTS.COM E-MAIL TO: INFO@SPECIALTYCOMPONENTS.COM	
						TITLE	
						LRAP150 AIR BEARING POROUS CARBON LINEAR	
TOLERANCES (UNLESS OTHERWISE SPECIFIED)						SIZE	
DECIMALS		ANGLE		UNITS		DRAWING NUMBER	
.X ±		.XX ±		.XXX ±		610-22029	
.015		.010		.005		REV	
		30'		INCHES		AE	
						SCALE	
						NUMBER OF SHEETS	
						1	