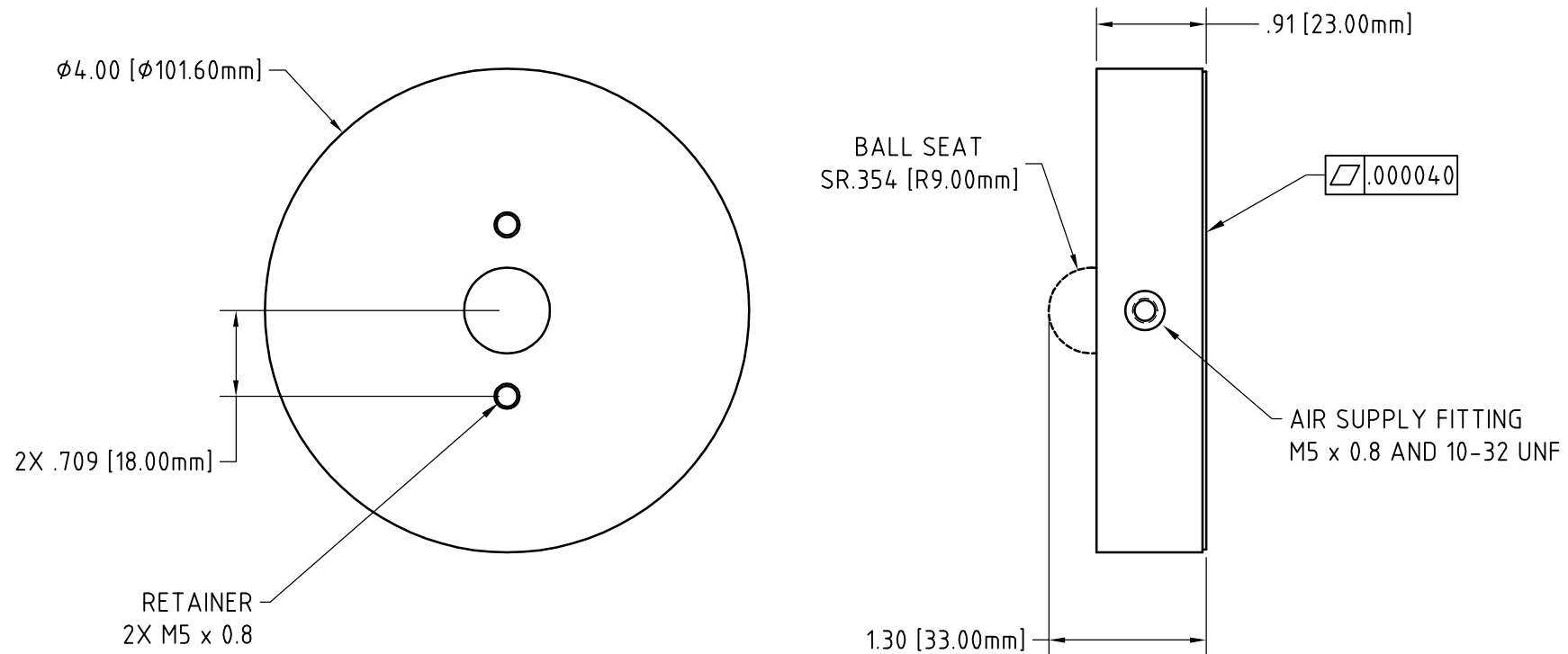


NOTES (UNLESS SPECIFIED):

1. ALL DIMENSIONS IN INCHES
2. DO NOT EXCEED RECOMMENDED LOADING SPECIFICATIONS
3. DO NOT CUT, DRILL OR MODIFY ANY PORTION OF THIS BEARING

#	DESCRIPTION	DATE	APPROVED
AE	SPECIFICATION RELEASE	10/30/2005	IWL



MATERIAL ALUMINUM / POROUS CARBON			
FINISH			
PART NUMBER			
TOLERANCES (UNLESS OTHERWISE SPECIFIED)			
DECIMALS	XX ±	XXX ±	ANGLE DEG ±
.015	.010	.005	30'
			INCHES

NAME	DATE
DRAWN GWB	10/30/2005
CHECKED	
APPROVED	
THIS DRAWING, INCLUDING ALL SUBJECT MATTER, ENCLOSES CONFIDENTIAL INFORMATION OF SPECIALTY COMPONENTS, INC. AND IS LOANED WITH THE UNDERSTANDING THAT IT SHALL BE RETURNED. IT WILL NOT BE USED FOR ANY PURPOSE EXCEPT THAT FOR WHICH LOANED UNLESS WRITTEN PERMISSION IS GRANTED BY THE OWNER. ANY DUPLICATION OF THIS DOCUMENT IS STRICTLY PROHIBITED.	
© specialty components, inc.	

		SPECIALTY		INC.	
		COMPONENTS			
CAGE CODE		14 VILLAGE LANE - WALLINGFORD, CT 06492			
1TV41		TEL: 203.284.9112 - FAX: 203.672.0371			
		WEB: WWW.SPECIALTYCOMPONENTS.COM			
		E-MAIL TO: INFO@SPECIALTYCOMPONENTS.COM			
TITLE					
LRA(P)400 AIR BEARING					
POROUS CARBON LINEAR					
SIZE	DRAWING NUMBER				REV
A	610-22036				AE
SCALE	NUMBER OF SHEETS				1