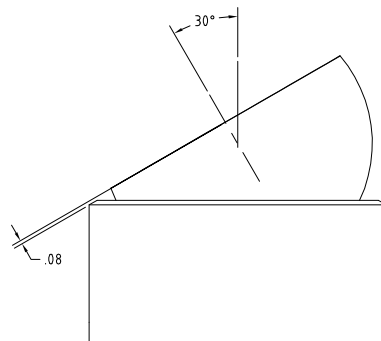
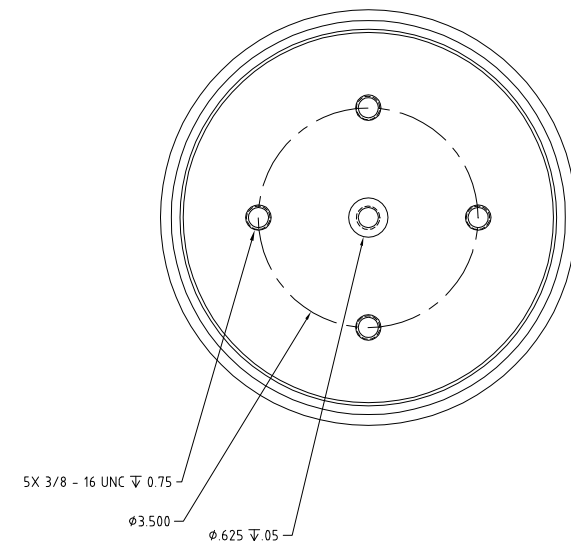
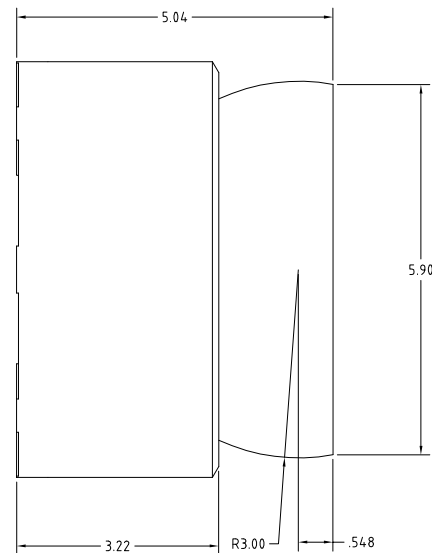
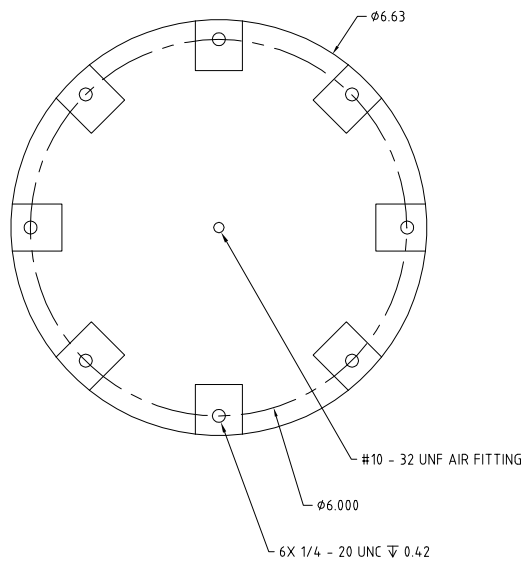



4. REFER TO MANUAL FOR MOUNTING LOCATION REQUIREMENTS

#	DESCRIPTION	DATE	APPROVED
AA	PRODUCTION RELEASE		



30 DEGREE TILT

MATERIAL	ALUMINUM	NAME		DATE	 SPECIALTY COMPONENTS INC.
		DRAWN	GWB		
FINISH		CHECKED			CASE CODE 17v41
		APPROVED	JH	5/12/2006	
PART NUMBER		THIS DRAWING, INCLUDING ALL SUBJECT MATTER, ENCLOSES CONFIDENTIAL INFORMATION OF SPECIALTY COMPONENTS, INC. AND IS LOADED WITH THE UNDERSTANDING THAT IT SHALL BE RETURNED. IT WILL NOT BE USED FOR ANY PURPOSE EXCEPT THAT FOR WHICH LOANED UNLESS WRITTEN PERMISSION IS GRANTED BY THE OWNER. ANY DUPLICATION OF THIS DOCUMENT IS STRICTLY PROHIBITED.			TITLE ASSY, SRA300
TOLERANCES <small>UNLESS OTHERWISE SPECIFIED</small> DECIMALS .00X +0 .005 -0 ANGLES .00X +0 .005 -0 UNITS 30° INCHES		© specialty components, inc.			SIZE DRAWING NUMBER 620-39127
		REV AA			NUMBER OF SHEETS 4