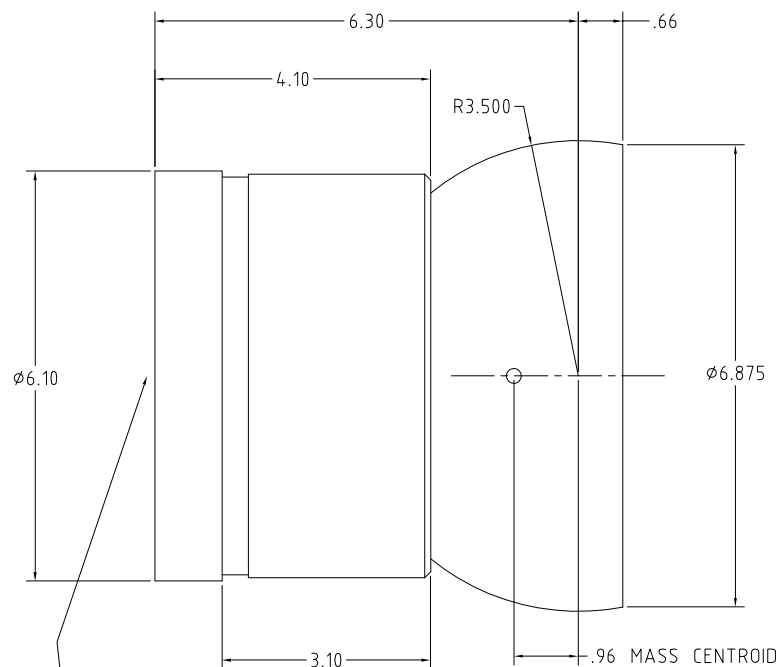
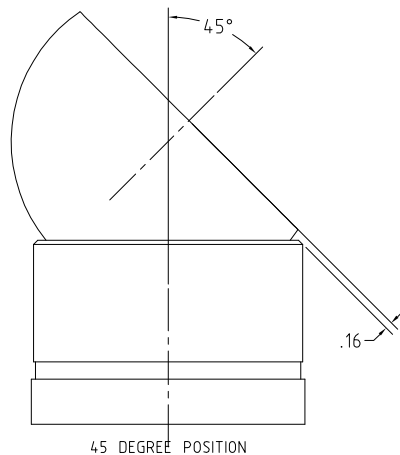


NOTES (UNLESS SPECIFIED):

1. ALL DIMENSIONS IN INCHES
2. DO NOT EXCEED RECOMMENDED LOADING SPECIFICATIONS
3. DO NOT CUT, DRILL OR MODIFY ANY PORTION OF THIS BEARING
4. REFER TO MANUAL FOR MOUNTING LOCATION REQUIREMENTS



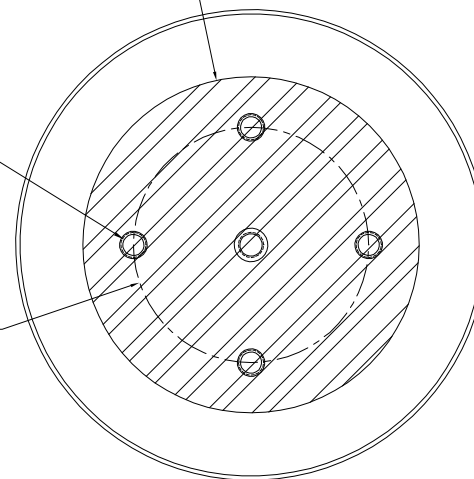
10-32 UNF AIR INLET THROUGH BOTTOM



Ø5.0 MAINTAIN MOUNTING CONTACT WITHIN THIS AREA


5X 0.316 ∇ 1
 ∇ 0.41 ∇ 0.07
 TAP 3/8-16 ∇ 0.6

Ø3.500 BOLT CIRCLE



PROPERTIES OF SPHERE
 RADIUS OF GYRATION ABOUT CENTROIDAL AXES
 X-X 2.13 INCH
 Y-Y 2.13 INCH
 Z-Z 2.27 INCH
 MOMENTS OF INERTIA ABOUT CENTROIDAL AXES
 LX 50.8 lbm-in²
 LY 50.8 lbm-in²
 LZ 57.8 lbm-in²
 SPHERE MASS
 10.51 lbm
 BASE MASS
 9.3 lbm

MATERIAL	ALUMINUM		NAME		DATE
FINISH	HARDCOAT		DRAWN	GWB	2/4/00
			CHECKED	ILM	3/27/00
PART NUMBER			APPROVED		
			THIS DRAWING, INCLUDING ALL SUBJECT MATTER, ENCLOSES CONFIDENTIAL INFORMATION OF SPECIALTY COMPONENTS, INC. AND IS LOANED WITH THE UNDERSTANDING THAT IT SHALL BE RETURNED. IT WILL NOT BE USED FOR ANY PURPOSE EXCEPT THAT FOR WHICH LOANED UNLESS WRITTEN PERMISSION IS GRANTED BY THE OWNER. ANY DUPLICATION OF THIS DOCUMENT IS STRICTLY PROHIBITED.		
TOLERANCES UNLESS OTHERWISE SPECIFIED			© specialty components, inc.		
DECIMALS	.XX ±	.XXX ±	ANGLE DEG ±	UNITS	
	.015	.010	.005	30° INCHES	

	SPECIALTY COMPONENTS INC.	
	35 VILLAGE LANE - WILMINGTON, CT 06097 TEL: (203) 651-0100 FAX: (203) 651-0101 WWW.SPECIALTYCOMPONENTS.COM	
CAGE CODE	1TV41	
TITLE	SRA350-R45 SPHERICAL AIR BEARING ASSEMBLY	
SIZE	DRAWING NUMBER	REV
C 620-39133		B
FEAT 1 DRAWING NO. SHEETS 1		

#	DESCRIPTION	DATE	APPROVED
A	INITIAL RELEASE	2/15/01	MH
	SPECIFICATION CONTROL DRAWING		
B	ESC-22134	04/10/2003	MH
	REVISED SPECIFICATION		



CAGE CODE		1TV41	
TITLE		SRA350-R45	
DRAWING NUMBER		620-39133	
SCALE		1 NUMBER OF SHEETS	